

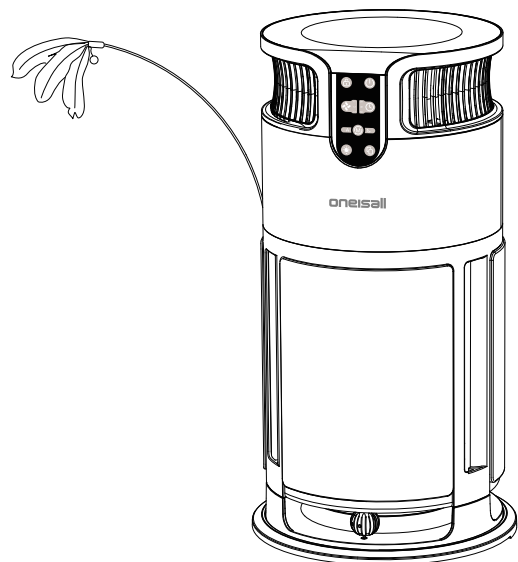
105mm

140mm



Pet Air Purifier

Model: PP04



User Manual
READ AND SAVE THESE INSTRUCTIONS
ON-D252

IMPORTANT SAFETY INSTRUCTIONS

Thank you for purchasing this air purifier. To prevent possible injury to you or others, or damage to property, please carefully read and follow the safety instructions below. If the unit or power cord is damaged, it must be replaced by the manufacturer, an authorized service center, or qualified technicians to avoid potential hazards.

- Please disconnect the power supply before installation, servicing, maintenance, or transportation.
- Do not touch the power plug with wet hands, as this may cause electric shock.
- Please turn off the unit and unplug it before replacing the filter.
- Before connecting the product to power, confirm that the voltage indicated on the rear or bottom of the unit matches your local power supply.
- If the unit or power cord is damaged, replacement must be performed by the manufacturer, an authorized service center, or qualified personnel.
- Do not damage the power cord or outlet. Never bundle, bend, or tie the cord during use. Using a damaged cord may cause electric shock, short circuit, or fire.
- Do not cut, modify, excessively bend, twist, pull the cord, or place heavy objects on the cord or plug.
- When unplugging, hold the plug firmly. Do not pull the cord, as this may cause short circuits, electric shock, or fire.
- A damaged plug, damaged power cord, or a plug that is not fully inserted into the outlet may cause electric shock, overheating, or fire.
- If the power cord or plug becomes unusually hot, turn off the unit immediately and contact an authorized service center.
- If you notice a burning smell, unusual noise, vibration, or any abnormal operation, turn off the unit immediately and contact an authorized service center.
- Clean the power plug regularly. Dust accumulation combined with moisture may damage insulation and cause electric shock or fire.
- Do not use damaged plugs or loose electrical outlets.
- Do not disassemble or modify the unit, as this may cause electric shock, malfunction, or fire.
- Do not use or store the unit in high-temperature, humid, or wet environments. Moisture may cause electric leakage, electric shock, or fire.
- Do not use the unit in areas with oily particles, such as kitchens, as this may reduce filter life or cause malfunction.
- Do not use the unit while fumigating indoors with insecticides.
- Do not clean the unit with benzene, thinner, or other solvents, and avoid contact with insecticide sprays. This may cause cracking, short circuits, electric shock, or fire.
- Do not insert fingers or foreign objects into the air inlet or outlet, as this may cause electric shock or injury.
- Do not allow water, liquids, volatile substances, or flammable materials (such as cigarettes or sparks) to enter the unit, as this may cause fire.

IMPORTANT SAFETY INSTRUCTIONS

- This appliance is not intended for use by persons (including children) with reduced physical, sensory, or mental capabilities, or lack of experience and knowledge, unless they have been given supervision or instruction concerning safe use of the appliance.
- This air purifier is not a substitute for proper ventilation, regular vacuum cleaning, or exhaust systems.
- Maintain at least 10 cm (4 in) of clearance on the front, back, and both sides of the unit, and at least 30 cm (12 in) above the unit.
- Do not place any objects on top of the unit or sit on it.
- To prevent interference, keep the unit at least 200 cm (79 in) away from appliances that use radio waves, such as TVs, radios, or radio-controlled clocks.
- Place the unit on a stable, hard, level surface. Do not place it on soft surfaces such as carpets.
- This product is for indoor use only. Keep it away from rain and outdoor environmental exposure.
- If the unit will not be used for an extended period, unplug it from the power outlet. Failure to do so may result in insulation degradation, fire, electric shock, or short circuits.

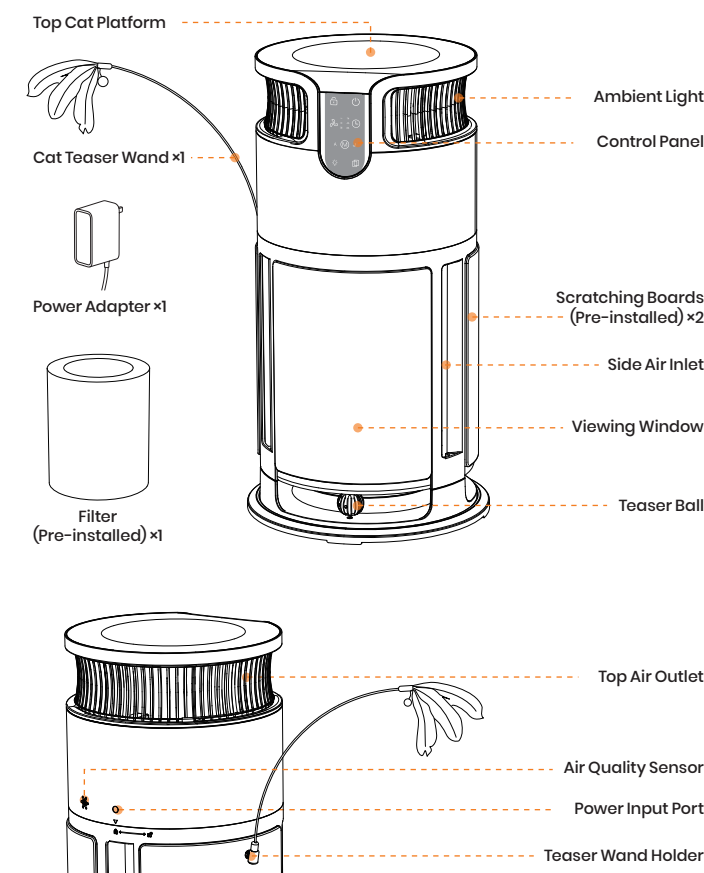
WARNING: To Reduce The Risk Of Fire Or Electric Shock, Do Not Use This Fan With Any Solid-State Speed Control Device.

READ AND SAVE THESE INSTRUCTIONS

FCC WARNING

This device complies with part 15 of the FCC Rules. Operation is subject to the following two conditions:
1. This device may not cause harmful interference, and
2. This device must accept any interference received, including interference that may cause undesired operation.

Product Overview



Operating Instructions

Self-Check Mode:

- When plugged in, the air quality indicator flashes briefly, then turns off. A beep sounds → Power button light solid red → Enter standby mode.
- During the first 20 seconds after power-on, the sensor is warming up. The RO0 indicator cycles Green → Blue → Orange → Red (1 second per color, repeated 5 times). After warm-up, the fan speed automatically adjusts based on air quality.

Memory Function:

- Power off (unplug, then plug in) → Restores factory settings (Fan Speed Level 2)
Power off (keeps plugged in) → Restores last used settings

Indicator Light Colors

Power Button
Red: Standby
White: Operating

Status Indicator
White: Normal operation

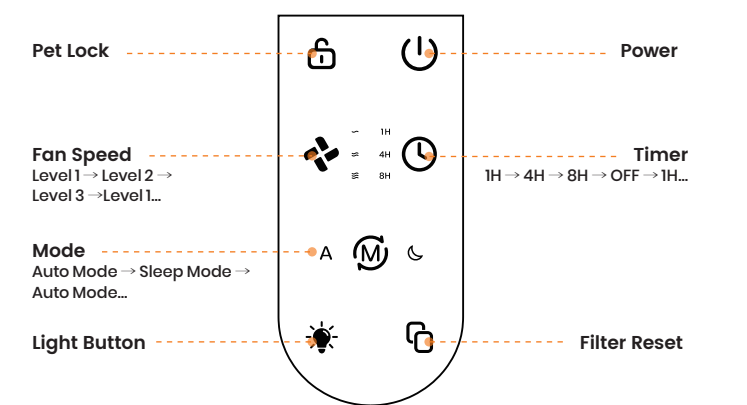
Filter Indicator
Red: Filter replacement required
Off: Filter status normal

Button Tones
Button presses are confirmed with beeps and tone alerts.

Air Quality Indicator
The indicator light shows real-time air quality based on PM2.5 levels:

Indicator Color	Air Quality Level	PM2.5 Range
Green	Excellent	≤70
Blue	Good	71-150
Orange	Moderate	151-250
Red	Poor	≥251

Control Panel



Power Button
When plugged in:
The air quality light flashes briefly and turns off.
A beep sounds, and the Power button lights solid red, indicating Standby mode.

Action	Machine Status	Indicator Light Behavior
Short press	The unit turns ON	Power button light solid white; other lights turn on in preset white mode
Short press again	The unit turns OFF	Power button light solid red; other lights turn off

Pet Lock Button

Action	Indicator Light	Machine Status
Press and hold for 5 seconds	Pet Lock indicator lights white	Activates touch-lock (anti-misoperation) mode
Press and hold for 5 seconds again	Pet Lock indicator turns off	Disables Pet Lock mode

Timer Button

Short press to cycle through timer options:
1H → 4H → 8H → OFF → 1H...

Timer Setting	Description
1H	Auto shut-off after 1 hour
4H	Auto shut-off after 4 hours
8H	Auto shut-off after 8 hours
OFF	Timer function disabled

Fan Speed Button

Short press to cycle through fan speeds:
Level 1 → Level 2 → Level 3 → Level 1...

Fan Speed Level	Indicator
Level 1	~ " indicator lights up
Level 2	~ " indicator lights up
Level 3	~ " indicator lights up

Mode Button

Short press to cycle through modes:
Auto Mode → Sleep Mode → Auto Mode...

Auto Mode

- The Mode indicator and "A" indicator stay solid white
- The unit automatically adjusts fan speed based on air quality
- Short press the Fan Speed Button to exit Auto Mode

Auto Mode Fan Logic:

PM2.5 Range	Indicator Color	Fan Speed	Motor Duty Cycle
≤70	Green	Speed 1	33%
71-150	Blue	Speed 2	58%
151-250	Orange	Speed 3	95%
≥251	Red	Speed 3	95%

Sleep Mode

- The Mode indicator and Sleep indicator stay solid white
- All other button lights and the air quality indicator turn off, the unit enters quiet sleep operation
- Short press the Fan Speed Button to exit Sleep Mode

Filter Reset Button

- When the filter indicator turns red, it's time to replace the filter.
- After replacing, press and hold the Filter Reset Button for 5 seconds. The unit beeps. The Filter indicator turns off, confirming the reset

Note:

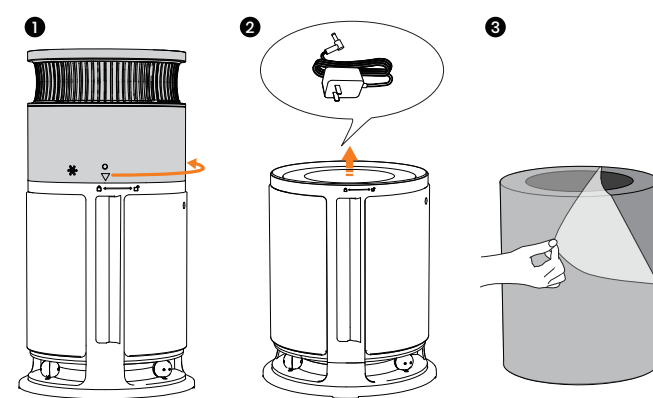
If you replace the filter before the indicator turns red, still press and hold the Filter Reset button for 5 seconds. The light may not change, but the beep confirms the reset.

Light Button

Short press to turn the lights on or off (toggle).

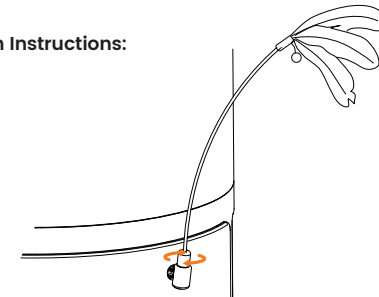
Installation Steps

- Open the box, take out the machine, remove all packaging, and place it on a dry, flat surface.
- Secure the bottom, then twist the top to unlock and remove it.
- Take out the filter and adaptor from inside the machine.
- Remove the packaging from the filter and reinstall it in the correct order. (do not tear the pre-filter foam, and keep the filter dry).
- Twist the top part back into place to lock it.
- Plug the adaptor into the power outlet and the machine.
- After self-check, the machine is ready for use.



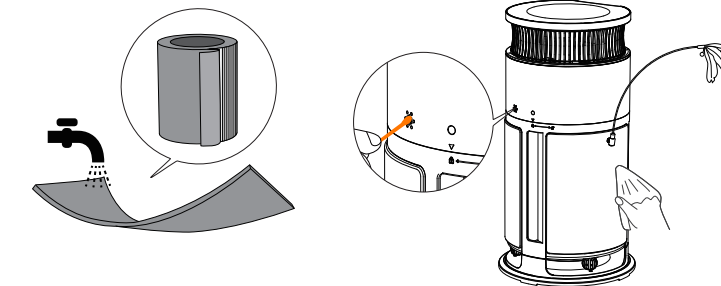
Cat Teaser Wand Installation Instructions:

- Remove the cat teaser wand from the lining.
- Twist the wand into the teaser wand holder.



Cleaning and Maintenance

- Regularly clean the hair on the pre-filter. We recommend cleaning it once a week. Maintaining a regular cleaning routine helps extend the life of the filter.
- Remove the black pre-filter, which can be rinsed with clean water. Be sure to let it dry completely.
- Wipe dust off the machine using a clean towel and clean hair from the filter and interior of the unit.
- Clean the air quality sensor regularly by wiping the sensor holes with a soft cloth.
- Always turn off the unit and disconnect the power before cleaning or changing the filter.



Warning:
Do not get the main components or filter wet. Never use water or cleaning machines to wash the device.

Filter Replacement:

When the filter indicator light turns red, it's time to replace the filter.

- Twist open the machine to remove the old filter.
- Remove the protective bag from the new filter and install it correctly.
- Twist the machine back together.
- Press and hold the filter button for 5 seconds to turn off the filter indicator light.

Note:
If replacing the filter midway, hold the filter button for 5 seconds to reset the indicator light.

Trouble Shooting

Issue	Cause	Solution
Machine not turning on	Power plug is not properly connected	Unplug and replug the power cord
	Power plug or cable is damaged	Contact customer service or your distributor
Fan not working	Machine is not turned on	Plug in and turn on the machine
	Machine placed on an uneven surface	Place the machine on a flat, stable surface
	Plastic packaging on the filter not removed	Remove the plastic packaging from the filter
Excessive noise during operation	1. Motor damage 2. Loose parts or foreign particles inside the machine 3. Motor Loose	Contact customer service (support@onesall.com)
	Machine is not placed on a flat surface	Adjust placement to ensure the surface is level
	Plastic packaging on the filter not removed	Remove the plastic packaging from the filter
Reduced airflow despite normal operation	Obstruction in the air outlet	Adjust the machine's position to ensure sufficient space around it
	Filter needs replacement	Check and replace the filter as needed
Filter warning light on	Filter has reached the end of its lifespan	Replace the filter

Warranty Information

Onesall offers a standard 2-year warranty. If you have any issues with your Onesall product, please do not hesitate to contact us. Be sure to include your proof of purchase, model number, and any relevant photos or videos in your message to expedite the process. Our Onesall support team is available 7 days a week and will respond to your inquiry within 24 hours. Thank you for choosing Onesall.

Please note that the Onesall warranty does not apply to used products or purchases made from unauthorized sellers. It's important to be aware that the warranty also does not cover consumable parts such as blades, guards, filters, brushes, and similar items. These parts may require regular replacement or maintenance.

support@onesall.com
+1877-522-8578(US) Mon-Fri 8am-5pm(PST)
www.onesall.com



@Onesall Official

PP04 宠物空净 说明书设计文件

尺寸: 105*140mm

材质: 128g 双铜 + 哑油

印刷: PANTONE 2018C +K

装订方式: 折页